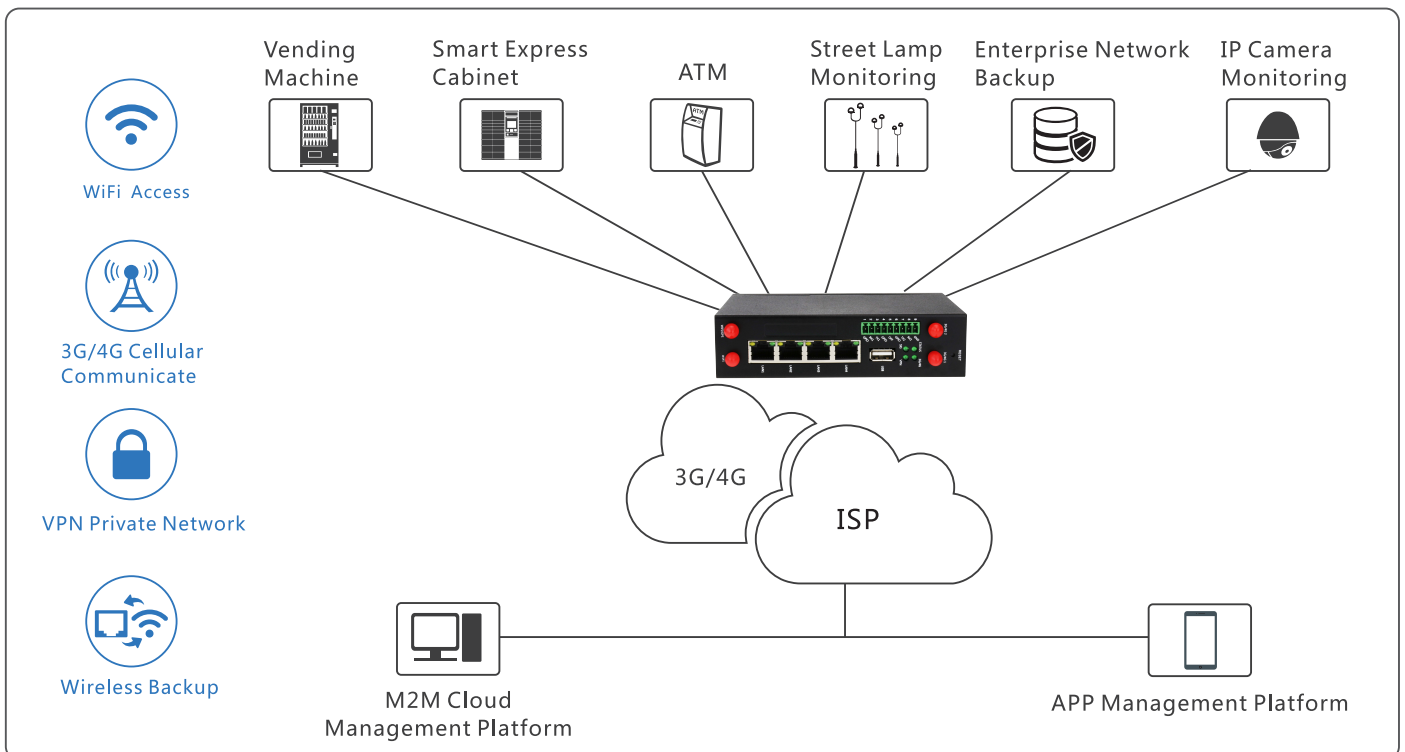


## H7960 Industrial M2M Cellular Wi-Fi Router

- ➔ 3G/4G/4.5G Cellular Data Transmission
- ➔ Active Link Auto Detect
- ➔ Dual SIM Cards Failover
- ➔ Embedded Watchdog, Auto Recovery
- ➔ Cloud Management Platform
- ➔ DIN Rail Mounting



## Technical Specification

Network	Network Access	◇ APN, VPDN ◇ TDD LTE, FDD LTE, WCDMA(HSPA+), EDGE, GPRS, EVDO, CDMA 1X
	Network Authentication	◇ CHAP/PAP/MS-CHAP/MS-CHAPV2
	WAN Protocol(Optional)	◇ Statci IP, DHCP, PPPoE
Protocol	Protocol Standard	◇ IEEE 802.11b/g/n(Optional)
	IP Routing	◇ Static Router, RIP, OSPF(Optional)
	DDNS	◇ Multiple DDNS
Safety	Firewall	◇ NAT, PAT, DMZ, Port Forward, Virtual Server ◇IP/Domain/MAC filter
	VPN	◇ IPSec VPN ◇L2TP, PPTP, GRE ◇ OpenVPN
Reliability	Backup (Optional)	◇ Dual SIM Backup ◇ Load Balance
	Active Link Detect	◇ Link session keeps alive ◇ ICMP link detect, reconnect offline
	Embedded Watchdog	◇ Hardware watchdog, auto recover from issue
Device Management	Configuration Mode	◇ Local or remote HTTP, Telnet, SSH ◇ Parameter backup & import ◇ SNMP v1/v2/v3,SNMP TRAP(Optional) ◇ Hongdian cloud management platform, traffic analysis, report accounting, location management, group management
	Upgrade Mode	◇ Local upgrade ◇ WEB/TFTP/FTP remote upgrade ◇ The management platform upgrade
	Syslog	◇ Local or remote log export
	Reboot Management	◇ Remote reboot, timing reboot
	Network Diagnosis	◇ Ping ◇ Device diagnosis
Hardware Interface	Ethernet Interface	◇ 4 x LAN 10/100Mbps self adaption
	USB Interface	◇ USB external storage
Power	Power Supply	◇ +5~+48V DC
	Idle Consumption	◇ < 2.4W
	Work Consumption	◇ < 3.6W
Environment Temperature	Environment Humidity	◇ ≤ 95% ( no condensing)
	Storage Temperature	◇ -40 ~ +85°C
	Work Temperature	◇ -30 ~ +75°C
Mechanical Environment	Impact	◇ IEC60068-2-27
	Collision	◇ IEC68-2-29
	Free Drop	◇ IEC68-2-32
	Vibrate	◇ IEC68-2-6, JT/794
EMC	Electrostatic Discharge Immunity	◇ EN61000-4-2,level 4
	Radiated RF Electromagnetic Field Immunity	◇ EN61000-4-3,level 3
	Electrical Fast Transient Immunity	◇ EN61000-4-4,level 4
	Immunity to Conducted Disturbance Induced by RF Fields	◇ EN61000-4-6,level 3
	Power Frequency Magnetic Field Immunity	◇ EN61000-4-8,>level 4
RoHS	Conduction	◇ CISPR22,CLASS B
	Radiation	◇ CISPR22,CLASS B
	Dielectric Voltage Withstand	◇ GB/T 25119
	RoHS	◇ IEC62321-3-1

## Dimensions

